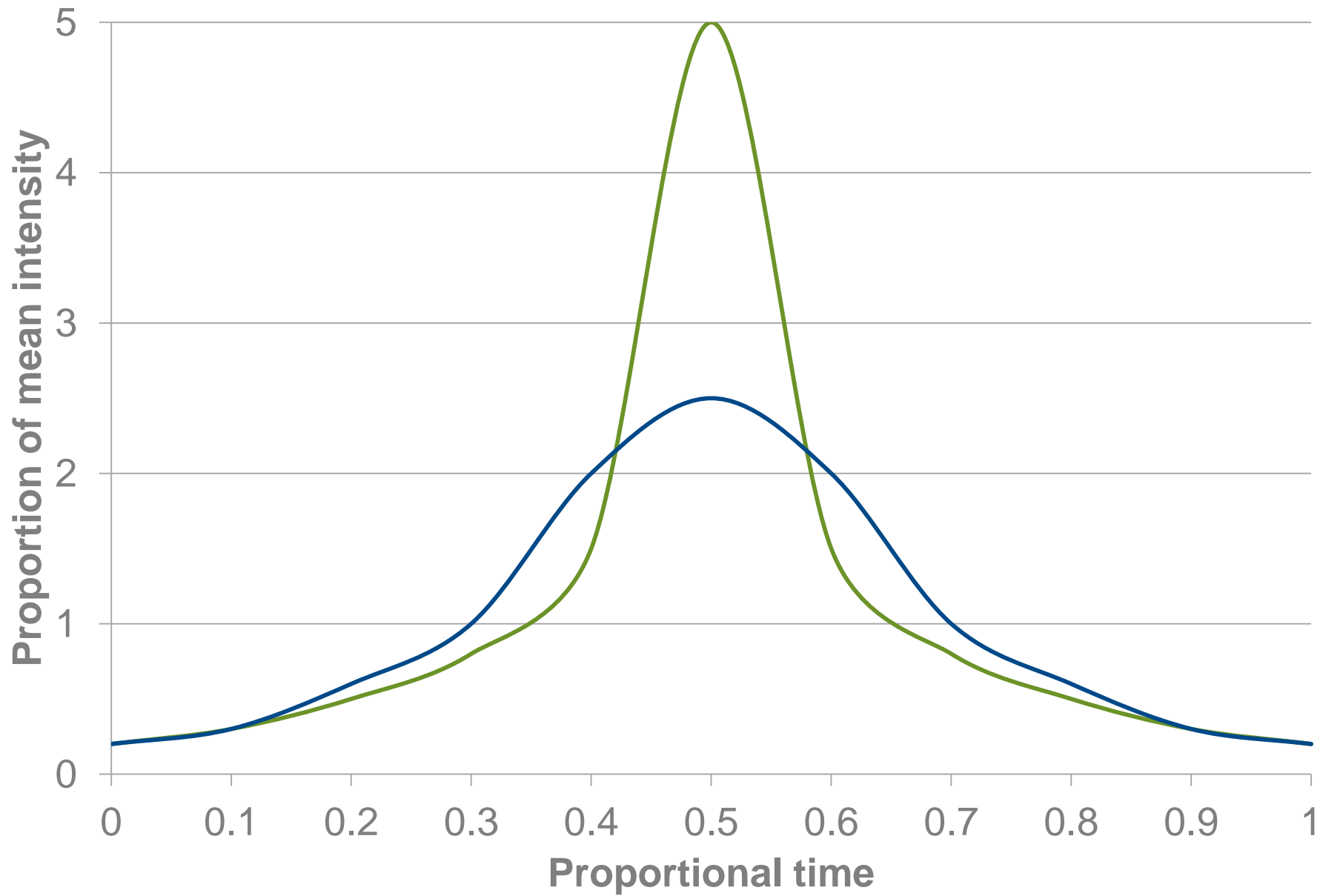


# Spatial rainfall distribution in flood modelling

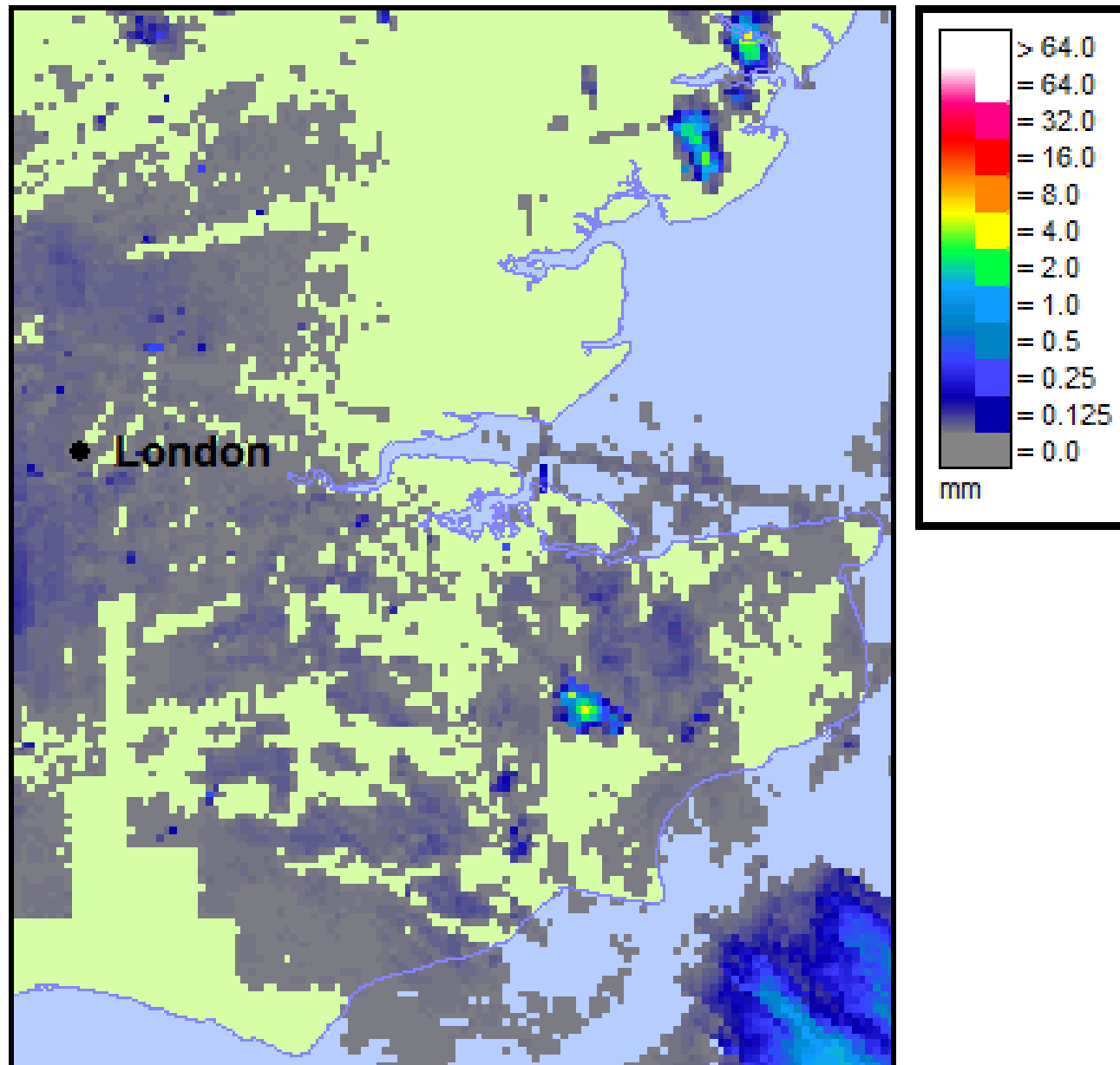
Adam Baylis  
Research Scientist  
21 September 2015





— Summer — Winter

Observation - rain-rate (H17) (totalled over previous 1 hour)



12:00 GMT Sun 20-Jul-2014

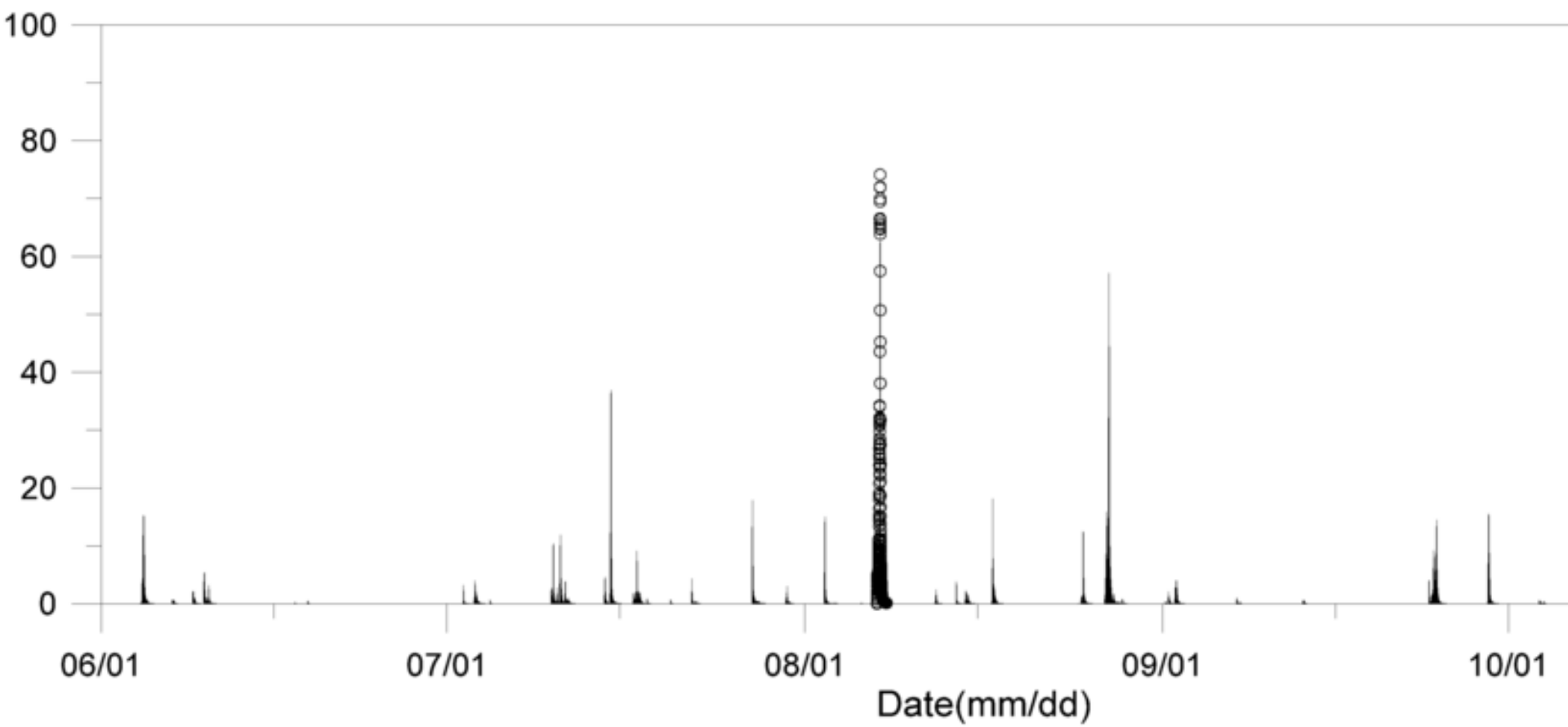


















# Our challenge

- ⇒ Benefits of a more complicated approach
- ⇒ Minimal increase in modelling costs

# Possible solutions

- ⇒ Improved screening tools
- ⇒ Automate parts of the process
- ⇒ Important samples / re-sampling



# Bonus challenge

- ⇒ synthetic spatial rainfall
- ⇒ Weather radar and raingauges available
  - ⇒ Varying quality
  - ⇒ Varying temporal resolution
  - ⇒ Varying length of record
  - ⇒ Irregularly spaced